

FINISH

WITH WAGNER

20+

spray tips
inside!

Cari Cucksey's
Best Painting Tips

Living Room Makeover
Blah to Beautiful

Matthew Mead's
Spring Spray Solutions

Tailgate Party
Spray & Celebrate



table setting

The **Wagner Home Décor Sprayer** makes craft projects fast and easy. This canvas tablecloth features a mushroom pattern. To make your own, cut mushroom shapes out of contact paper and adhere them to fabric in desired pattern. For best results, set sprayer to lightest spray setting, then paint the fabric with a diluted mixture using equal parts paint and water.

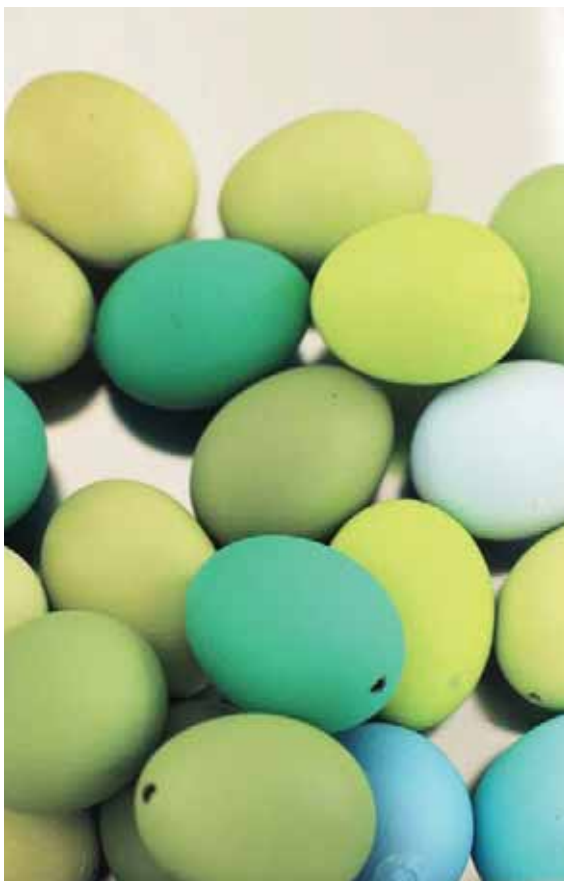


SPRING 2016 CONTENTS

7

Eggs-cellent Idea

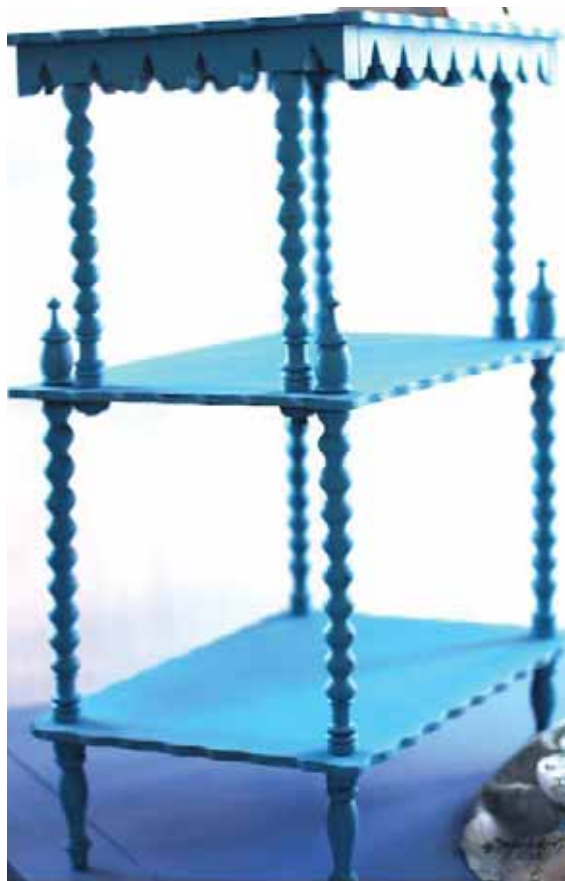
Use the Wagner Home Décor Sprayer on your favorite Easter icons.



10

Living Room Makeover

Spray, roll and rejoice with a new room in shades of blue.



20

Cari's Paint Paradise

Visit with HGTV host Cari Cucksey at her loft and paint headquarters and see how she uses her Wagner sprayer.



38

Tailgate Ready

Revive your truck bed and be party ready with a Wagner MotoCoat Sprayer.





Spring is on the way and I'm inspired to set some goals. This year I'm looking to give everything my own personal stamp. Whether its a piece of furniture, a carpet, a lampshade, or fence, I'm going to go about it by injecting it with whatever might inspire me . . . colors, patterns, and finishes. I'm unique and I want all of my surroundings to express that. Secondly, I'm going to move items from my dreaded task list to my creative file. There I will have tear sheets, paint palettes and maybe even sketches to inspire my path to getting all of my projects done in a super creative way. I'm going to share my plans with creative cohorts and even invite friends to join me as I undertake personalizing my porch floor, my cottage ceiling, and all the accessories that go into making my house a home. And what will lead the way? My Wagner paint sprayers and paint tools, of course. These innovative products make it fun and easy for me to style every project with my own unique personal stamp! ***I can't wait!***

Mandi

Spring

I visited Cari Cucksey in her new loft space and got a lesson in all of her creative ways to use a Wagner sprayer . . . genius!



Wagner Tool Used:
Heat Gun



easter wraps

The **Wagner Heat Gun** makes you *hop to it* with a clever way to present Easter sweets. Place candy on a bunny or egg shaped piece of wood or fill a decorative carrot basket. Wrap in shrink wrap found at the craft store and tape in place on the back using packing tape. Seal tightly in place with the Wagner Heat Gun at the lowest setting. Keep gun at least six inches from the wrap to prevent holes. Hang from a ribbon and **Enjoy!**

FINISH

WITH WAGNER
SPRING 2016

MATTHEW MEAD

editor, creative director, photographer

JENNIFER MEAD

managing editor

LISA BISSON

studio assistant

AMY CHALMERS

copy editor

OUR HERO PRODUCTIONS

graphic design

WAGNER CREATIVE ADVISORY BOARD

Trisha Gregory
Ben Furueth
Steve Machacek

WAGNER PRODUCT ADVISORY BOARD

Jon Beaton
Eric Julstrom

PUBLIC RELATIONS

Julie Goetz (julie@goetzresultscomm.com)

WAGNER SPRAYTECH CORP.

1770 Fernbrook Lane
Plymouth, MN 55447
wagnerspraytech.com
1-800-328-8251



soft touch

Cut a leaf stencil from contact paper and adhere to a pre-made pillow made of canvas or linen. Adhere design to pillow top by spraying with the **Home Décor Sprayer**.

FINISH with Wagner Magazine is published in partnership with Matthew Mead Productions and Wagner SprayTech Inc. The editorial content is intended to explain and simplify home improvement projects. Tools, products, materials, and techniques are intended to be a guide, therefore, Wagner SprayTech Inc. and Matthew Mead Productions assume no liability for omissions, errors or the outcomes of any project. Readers should follow all product manuals and material manufacturers' guidelines. Results may vary.

All rights reserved. Neither this publication nor any part of it may be reproduced or transmitted in any form or by any means, electronic, mechanical, photocopying, recording, or otherwise, without permission of Wagner SprayTech Inc.

FINISH with Wagner is a digital magazine published quarterly.

off the wall

Use your Wagner Home Décor
Sprayer for everything . . .



Help out the Easter bunny this season and hop to spraying all of your decorative eggs with the **Home Décor Sprayer**.

Hollow white eggs, wash and dry them thoroughly and place them atop wooden skewers in a foam block. Spray in your favorite shades of latex paint and dry them quickly with a **Wagner Heat Gun**. Make centerpieces, egg garlands, or hide them about the house for a festive and fun egg hunt.

Drying your freshly painted eggs with the Wagner Heat Gun will speed up your production process and allow you to paint dozens of eggs.



A Season Ahead

romantic summer style →

Get your guest room ready for the summer season with this easy and romantic chic bedside table. Remove all hardware and spray with your favorite paint using the **Home Décor Sprayer**. Add latex foam embellishments like Eflex or wooden appliques. Soft greens, cream and pale blues are all paint hues that team well with white summer bedding to achieve romantic style.

Silver details add a subtle and elegant point of interest.



Wagner Tool Used:
Home Décor Sprayer



*Works great with
chalk style paints*



Introducing the Home Décor Paint Sprayer For small projects with big impact.

To view videos visit wagnerspraytech.com/homedecorsprayer



Available at select Home Depot stores,
homedepot.com, lowes.com, amazon.com, walmart.com



PAINT SMART.





shades of *blue*

Take a simple living room from blah to beautiful with three shades of blue paint. Wagner tools make it easy and the result is truly stunning!

rhapsody in blue(s)

If you aren't sure your personalized paradise is just a spray away, this living room makeover will make you a believer. A mix of colorful paint hues in blue take simple thrift shop furnishings to new heights as personalized and coordinated pieces. A well-worn coffee table, multi-cubby wall unit and decorative side table were all culled from a thrift shop for under \$200. Fabrics and botanical prints collected along the way inspired the paint scheme. Using Wagner products like the [SMART Edge Roller™](#) and the [Home Décor Sprayer](#) transformed this ho-hum living room into a dreamy designer space.





Wagner Tools Used:
Home Décor Sprayer
SMART Edge Roller™

cool color

In little more than a day from inspiration to completion, this living room found its own style statement with paint. Color sets the mood, and now the light dances over engaging shades of blue. A subtle area rug in blues and grays and curtain panels from a thrift shop give this room a feeling of levity as well as contemporary elegance.



TEN DOLLAR TABLE

A spray of paint with built in primer makes this ten dollar table look like a million.

spraying your space

Since your whole room is getting a face lift, start your efforts by painting your furniture. Drape a wall and floor with painter's drop cloths to create a paint station. Vent the space by opening a window or outside door and then begin by giving your pieces an even coat of paint. These furnishings were coated with California latex paint in a flat finish. Primer in the paint means a smooth, opaque finish. You may choose either the [Home Décor Sprayer](#) or the [FLEXiO® 890](#) to upcycle these pieces. Remember to keep the nozzle only three inches from the surface and glide low and slow in an even pattern.



Once you get started, any surface can be revived with paint. This living room makeover is a prime example of how versatile Wagner paint tools are and how many different furnishings can be painted with an array of paint treatments. Projects become more about creative personal statements than simply painting a room.



FRESCO FACADE

Start by spraying the wall with the **Home Décor Sprayer**. Then give it sheer depth with a white wash applied with the **SMART Edge Roller™**.



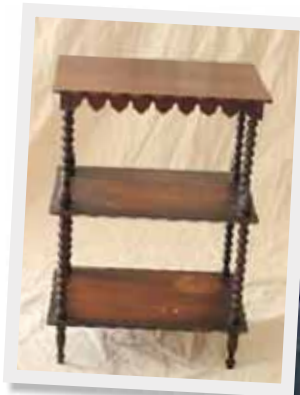
from blah to blue-tiful

Color can transform and so can Wagner paint tools. A simple brown living room holds all the potential to be something more with the right paint and the right tools. We picked three shades of blue to make this space personal and beautiful. The wall was sprayed a colorful shade called Parrot Head and then was mottled using the **Wagner SMART Edge Roller™** filled with diluted white paint. Simply pass the roller over the semi-wet wall and wipe away excess paint with a sponge. Repeat until entire wall softly mottled with white paint creating a fresco-like finish.



Brown to Beautiful

A castoff table with turned legs and intricate edging is a challenge to cover well with a traditional paint brush. With the **Home Décor Sprayer** it only takes a matter of minutes to coat all of the intricate parts with an even coat of paint. For something like a table, start with it upside down and paint those areas first. Then, flip it upright to paint the rest. Achieve coverage on all surfaces and keep adjusting the nozzle for horizontal or vertical spray.



Wagner Home Décor Sprayer

Paint with a paint sprayer is economical. It efficiently coats each piece using about half the paint required with a brush.

Coffee Table

With an even coat of paint from the **Home Décor Sprayer**, this beat up, brown coffee table is reborn as a luminous focal point for displaying flowers, books, and personal collections.





Bookcase Solution

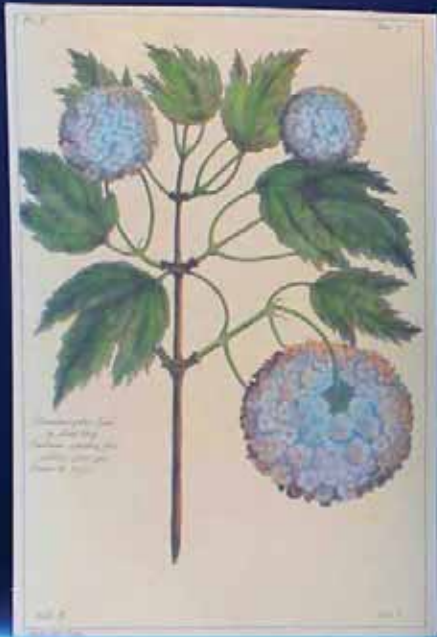
Shy away from painting a book case or cubby NO MORE! Wagner spray tool products make it a cinch to paint the inside of any piece of furniture. We used the **Home Décor Sprayer** to paint the inside of this unit a reflective shade of blue. On the outside and cross bars of the front of the cubicles, we used the **SMART Edge Roller™** and a periwinkle shade of blue to finish the piece.



PROBLEM SOLVED

Paint any interior of any furniture piece in seconds with a Wagner sprayer.

Paint inside a bookcase with amazing ease.
What would take hours and hours with a brush takes minutes with the **Home Décor Sprayer**.



Cari

paint paradise



HGTV host Cari Cucksey takes on repurposing her ultra-cool downtown loft with her own paint palette and spray tools from Wagner.

4

projects featuring
HGTV host
Cari Cucksey!



all in the details

Instead of Type O coursing through Cari's veins, she's got a colorful liquid paint that pumps all of her creativity. Her style is like a transfusion for anything she touches and her home is a reflection of that dynamic.

"Repurposing is my life," she exclaims, "And nothing is free from my signature style!" Her kitchen cupboards have been sprayed and distressed with a warm shade of gray that compliments the appliances and vintage-like floor tile. Additional furnishings have their own personalities and colors to create a collected, eclectic look.



SPRAY A FINISH

A chippy multi-hued utility chest is sprayed with clear urethane to protect its vintage appeal.

SPRAY WHAT YOU SAY

Loving your home can be just a spray away as it really gives you control over color and style of everything. Let your space speak for you with the shades and hues that make you happy and grounded in your home. Cari chose paints from her RePurpose collection to take simple cabinets to a stellar design level. To get the look, spray your cabinets with the [Home Décor Sprayer](#) and while still wet, distress with steel wool. Once dry, your finish will have a time-worn vintage look.

Wagner Tools Used:
SMART Edge Roller™
SMART Roller™
FLEXIO® 890



from flat to
finessed

after

focal wall

Cari Cucksey's new loft space is undergoing a transformation. Cari and her husband Vince felt that something was lacking. Being like the "cobbler's kids" they realized their own walls needed a statement, like a fresh coat of paint. Cari found a favorite painting for the focal wall and selected her colors from its abstract, muted canvas. Soon the walls were awash in Celadon green and accessories were corralled to match and complete the look. "My paint colors really bring a space together and once I selected an inspiration piece—a favorite painting—I had a direct path to a beautiful statement wall."

The before shot of the wall was simple and uninspiring. Cari placed her palette in the space for a couple of days with a favorite painting to draw out just the right shade of green.

"My paints are made to be mixed and matched," says Cari, "Just the right shade can bring design together and complete a finished designer look."



Turning a wall into a focal point is easy with a bit of paint and these Wagner rollers that can be pre-filled with paint. Cari and her husband Vince taped off the hallway with butcher's paper and blue tape. Once prepped, they cut in with Cari's wall paint and created a finish coat with the **Wagner SMART Roller™** in Cari's RePurpose paint, Celadon.



GAIN AN EDGE

Cari uses the **Wagner SMART Edge Roller™** to cut in around ceilings, baseboard, and door frames.







color & style

Paint unleashes the ability to make it your own and Cari's use of color in her loft space makes every inch her own personal statement. Vintage chairs are washed in a favorite shade of Mohair blue—the color picks up on the same color notes in the vintage needlepoint. Flannel Gray brings an island corner corbel to life. Cari's Mohair blue helped her to pick out this velveteen side chair that anchors the dining table. In her living room, a vintage wing back stands out in relief of a brick wall sprayed with a hand-made mix of RePurpose blues.



A photograph of a room with a blue brick wall. A large, ornate cuckoo clock hangs on the wall. In the foreground, there is a high-backed armchair with a patterned fabric in shades of blue, green, and gold. To the right, a window with a wooden frame is visible. The text "paint sets the mood" is overlaid on the image in a white, cursive font.

paint
sets the
mood



the great divide

The challenge? Create some intimate space in a wide open floor plan with these great carriage house doors given to Cari. "I've had these doors for a while and wanted to use them in my new space. I decided to hang them between the kitchen and living room to easily divide the room. They are on casters so they can be moved to one side easily. I love their graphic worn look but wanted one unified look. Painting would have covered the age so I went for a translucent stain sprayed on with the **FLEXIO® 890.**"

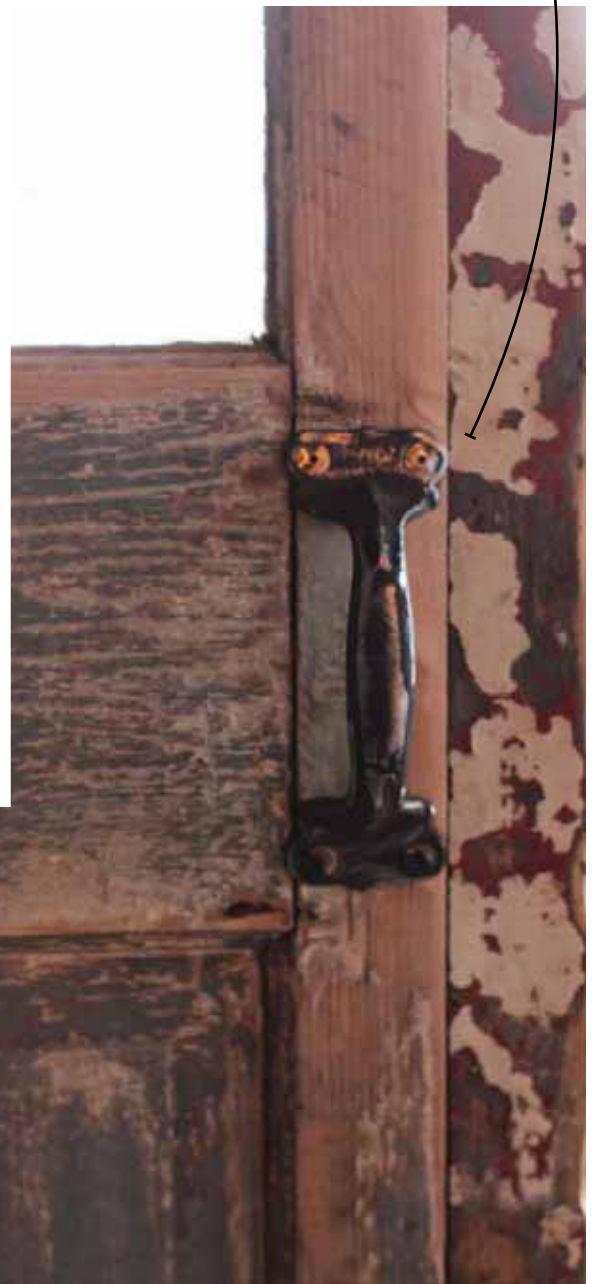
after



before

Age and graining in the wood is desirable, so a gray stain makes the most sense.

Old hardware is perfect for keeping the look authentic on these vintage doors.



show me the door

Spray staining the door is easy and transformative. Newsprint, blue tape, and the **FLEXiO® 890** make light work of a big project.

“My desire is to unify these shaded doors with one even, vintage color . . .
aged patina
intact.”



Mix up Cari's stain in minutes!
Combine 3 parts paint with 2 parts water. Stain should be the consistency of milk. Use the sprayer to coat the surface. Wipe away with clean rag so that stain saturates surface but doesn't cover the grain.



Cari preps by placing paint cloths on the floor and covering the window panes with paper and tape. Cari holds the sprayer nozzle six inches from the surface and moves in a low and slow motion horizontally across the door. Working in four foot sections at a time, Cary stops and removes excess stain with a rag and gently tubs the stain into the surface.



Six inches from the surface seems like a close range for spraying, but it is the perfect position for the best coverage.



Cari finds all her furnishings at estate sales and flea markets.



The final finished doors look as though they have always been washed in gray and make an excellent backdrop for a moveable kitchen furniture grouping. Cari likes to sit with friends and family over a favorite cup of tea and dream of more spray projects.

RUSTIC MODERN

Cari mixes mid-century furnishing with rustic backdrops with ease.



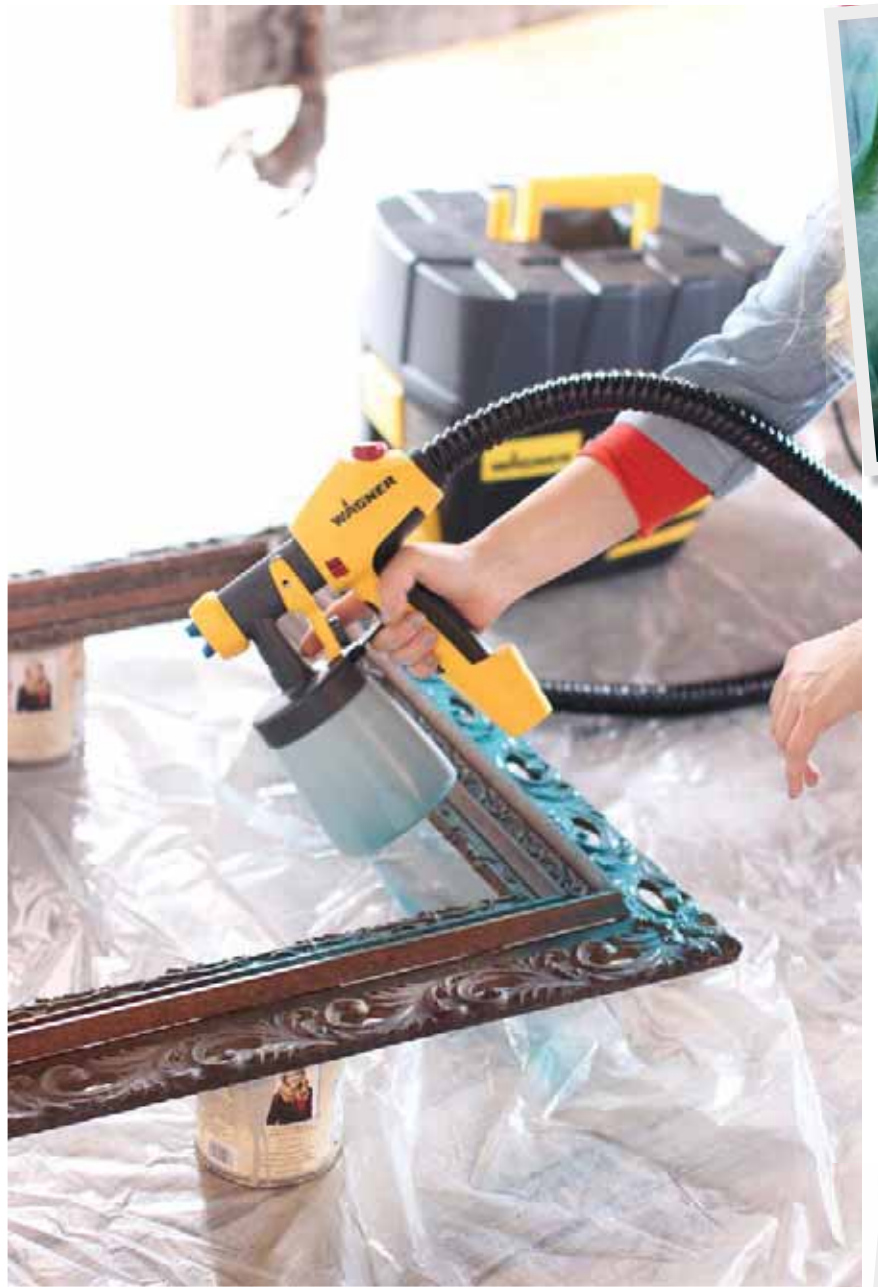
gallery wall

Cari's been collecting vintage gesso frames for years and enlarged some of her favorite family photos to fit inside. Frames are sprayed with current RePurpose colors by Cari with a drop cloth, paint, and the FLEXiO® 890.



GET FRAMED

Vintage frames needn't be perfect. Fresh paint will cover any blemishes.



Follow Cari on her website and order her colorful, beautiful paint colors for all of your own RePurpose projects @ repurposeshop.com.



COLOR SURGE

Fill several **FLEXiO**® cups with different paints and move seamlessly from color to color.





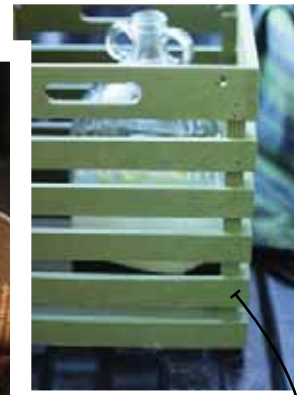


Spray your truck bed and some cast off furnishings and get the team ready for game day celebrating!



Revive your truck bed and renew its uses with a Wagner sprayer that makes DIY fun and easy.





Castoff boxes and baskets sprayed in the team colors are perfect for picnic totes.

A team wagon builds spirit and makes sense. Corral your gear and **celebrate** your efforts at every game.

the new food truck

Bring your soccer gear and everything else you need to celebrate right to the field. Baskets and boxes hold refreshments. Paint tables and totes in team colors and invite competitors to join you after the game to perch on the tailgate and recharge. This “food truck” will be the talk of the team.

A pickup truck bed can take a real beating and having it relined professionally can be costly. Use **Wagner's MotoCoat sprayer** and recast your truck bed with a tough, glossy coat of liner perfect for all the moving and hauling of everyday life or your favorite sports team. Then at the end of the day marvel at the indestructible finish and throw a party to celebrate.





GIVE YOUR OLD TRUCK A BRAND NEW BED.

THE NEW MOTOCOAT™ COMPLETE SPRAY SYSTEM FROM WAGNER®

Designed for DIY auto enthusiasts and installers, the MotoCoat™ sprayer will safely apply protective materials for truck beds and undercoating, rubberized peelable coatings and auto finishing paints – no compressor is needed.

It's also the safest sprayer available, with a spark-contained motor and a 39-foot hose for complete maneuverability around vehicles. With Wagner's exclusive X-Boost® turbine, it provides fast and complete coverage with low overspray. Learn more at WagnerSprayTech.com/MotoCoat.



PAINT SMART.®

WAGNER®



before

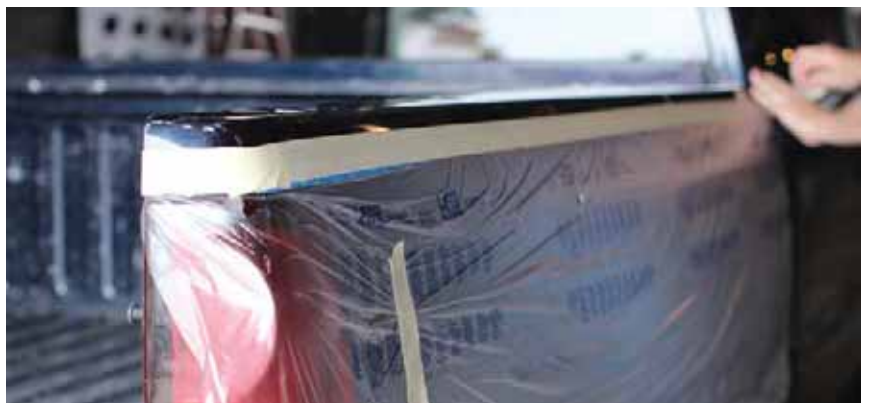
the revive & reline challenge

THE CHALLENGE: A well-used pickup needs a quick renew to become the team pep wagon for getting all the gear to the field and for reviving the players at the end of the games.

THE SOLUTION: A tough coating of Rustoleum truck bed liner sprayed on using the Wagner MotoCoat Sprayer revives a worn truck bed fast and inexpensively.

THE RESULT: A new surface that makes the truck look great and ready to compete on the field as the *peppiest* pep wagon around.





PREP FOR PEP

Use painters tape and plastic drop cloths to mask off and protect the truck's exterior siding from any over spray.



Truck bed coating keeps buckets and bottles stationary and skid free.



CREATE YOUR OWN ACCESSORIES

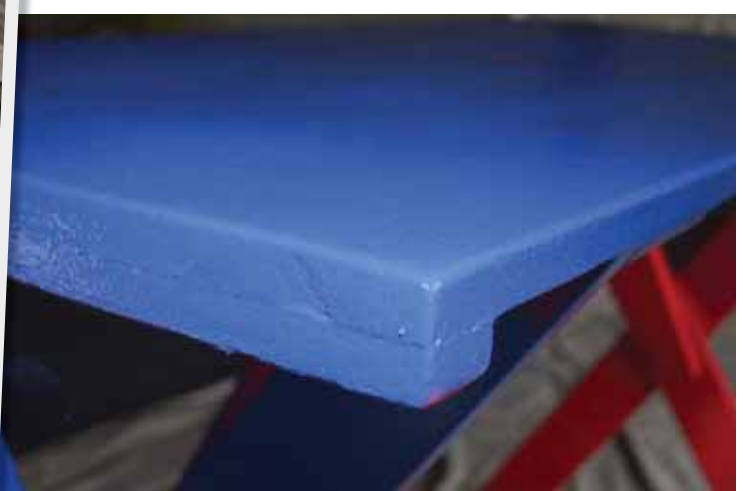
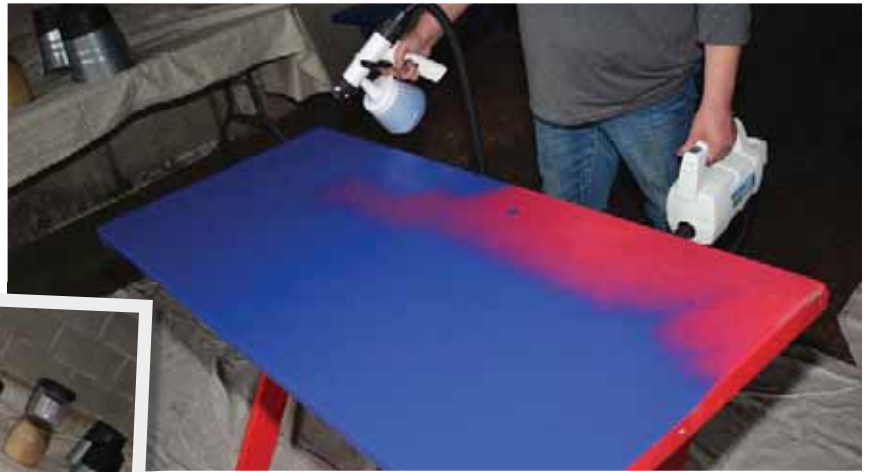
Create a no-skid bottom for all kinds of totes and containers that will ride in the bed of the truck. Aluminum pails, glass bottles and jars and even the bottoms of baskets can all be coated to keep items in place as gear gets moved from field to field. Tape off containers to expose spray area. Coat and let dry overnight. Handwash jars and bottles with warm soapy water after use.



This cookie jar is good to travel.

picnic table

An old castoff picnic table and a pair of benches are transformed into a spectacular setting awaiting the winning team. Small, but sturdy, they provide an additional place to set up food as well as a resting spot for players to recharge. To paint your own, hold the sprayer nozzle three inches from the surface you are painting and glide back and forth in an even, horizontal pattern.





team spirit

Coordinate all of your team items by spraying them the same hues as your uniforms. Employ the **Wagner Home Décor Sprayer** to transform baskets, thrift store picnic tables, and all kinds of boxes and containers that can hold team supplies. Store your coordinated items all together for easy access until the next game.



Wagner's Home Décor Sprayer

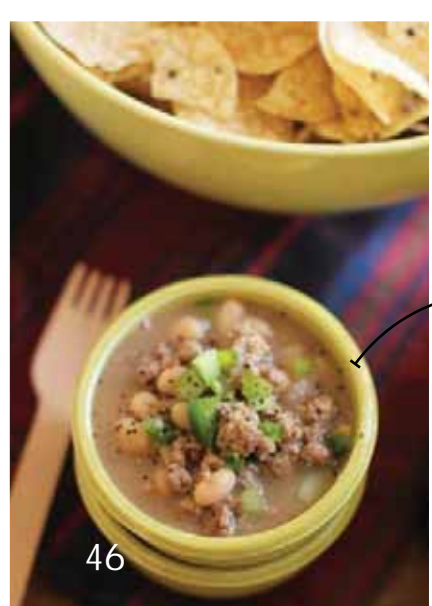
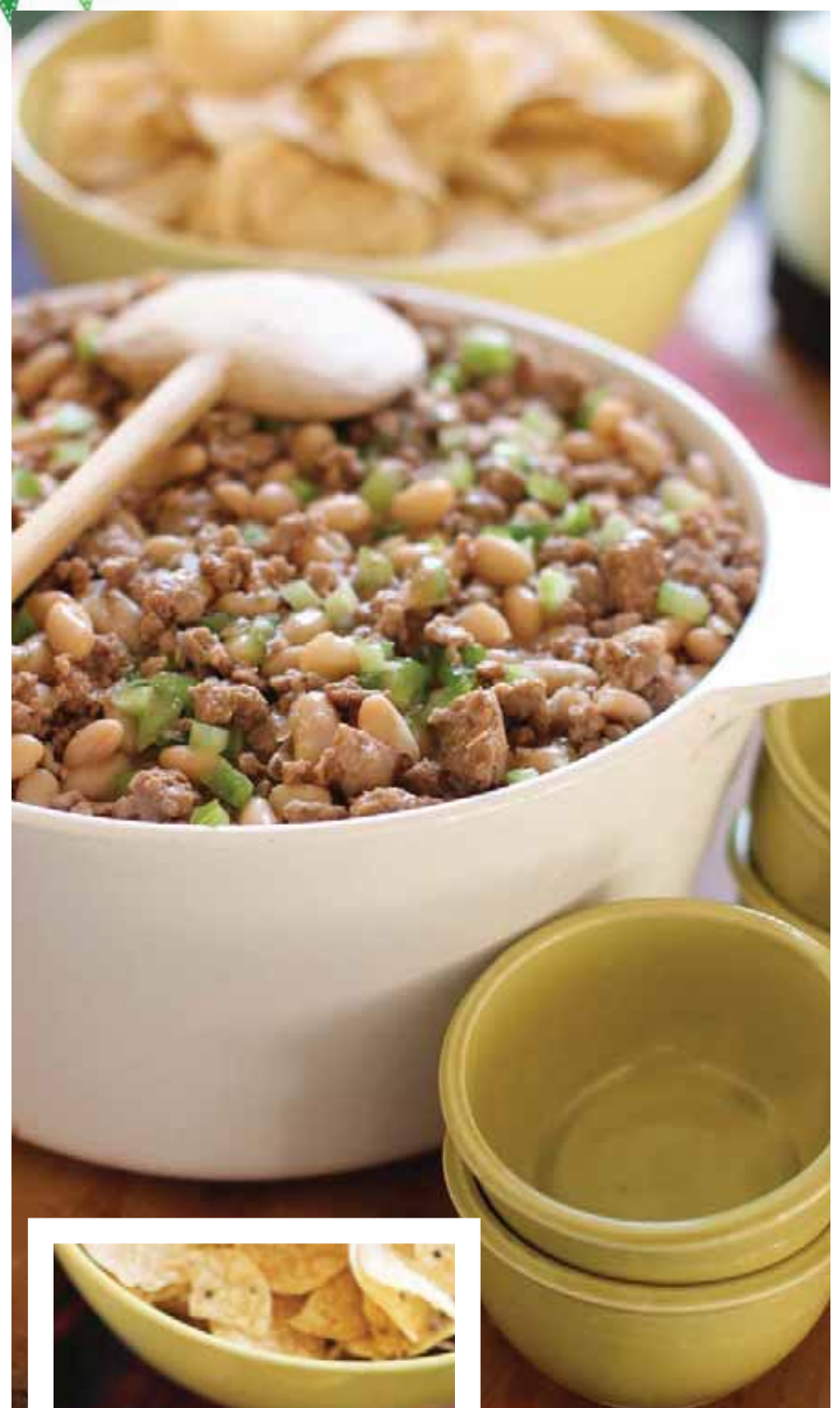
This smaller tabletop sprayer has the right amount of power for these projects. In just minutes, you can personalize all of your gear in your team colors and make a real splash on the sidelines.



Our colors were inspired by the soccer team uniforms. A colorful and coordinated scheme really supports team pride.



When you have a great foundation for a tailgate, food comes together easily and naturally.



TURKEY CHILI

A heaping cup of chili will keep athletes energized and game fans warm on those brisk spring afternoons.

Who knew a
fresh truck bed liner
could inspire such
team spirit?

It will do the same for
you no matter what
game you are playing.



Fun and easy food looks great
at this tailgate celebration.



ShopTalk

Matthew Mead had the pleasure to sit with Cari Cucksey and chat . . . here's a glimpse at their fun exchange. Pull up a chair!



Matthew Mead: Cari, your style is fresh and engaging and makes great use of repurposed items. How do you decide what gets sprayed with paint?

Cari Cucksey: I've been an antiques dealer for years and there are certain items I won't paint. Quarter Sewn Oak, Maple, solid

(not veneered) Mahogany, Burl wood, and other solid wood pieces. My RePurpose™ ReColor™ Tinted Tincture stain product is the perfect alternative to paint and a great way to modernize these types of pieces. My stain is offered in 12 great sprayable colors.

MM: You have a real playful use of color in your paint collection and the pieces that you redo. What do you love about color and do you have a favorite paint color from your collection?

CC: I'm a firm believer that everyone should incorporate color in their home. Color in your home expresses your personality and helps your home feel warm and inviting. My current favorite paint color from my ReColor™ line is Mohair Blue.

MM: How can painting a wall change the mood of a room? Do you find that

just a fresh coat in a new hue changes a space?

CC: Our moods and thoughts are enhanced by color so painting a wall can completely change a space. The psychology of color has always intrigued me and it is no mistake that we chose green for an accent wall in our home. Green is a great color for any room in your home because it is a calming color that encourages comfort and warmth.

MM: Your new loft space has a very open concept feel. How do you mix colors for best effect?

CC: My husband and I collect a variety of periods of antiques. Our collections range from mid-century modern to art nouveau to the Federal period. Color is the glue that brings all of the styles and periods together creating a fun, eclectic but cohesive space.

MM: Your re-purposed furnishings have all different finishes . . . tell me about your favorite wet steel wool treatment and how do you achieve it using a sprayer?

CC: My paint line has the same qualities of the chalk paints that are available but the difference is that my line creates a buttery soft satin smooth finish without the wax. We love to use triple '000' steel wool **wet**—saturated



I'm a firm believer that everyone should incorporate color in their home.



with water—after spraying a piece and letting it dry thoroughly. The wet steel wool not only erases any DIY uhohs and drip marks, but it also brings out the buttery soft smooth finish. The wet steel wool can be used for distressing and giving your piece a weathered look.

MM: Why do you love using a Wagner paint sprayer?

CC: I love using a Wagner sprayer because it is easy to use and you can create beautiful transformed pieces so quickly!

MM: I know you chat with lots of folks at outdoor antiques shows and fairs. What do you tell them about using a paint sprayer?

CC: Power tools and sprayers can be intimidating to some folks, so I really stress and showcase the ease of use and how quickly you can finish your projects.

MM: Your vintage shop and paint line are becoming a super attraction in downtown Holly, Michigan. What do you want your fans to know about a visit to your new headquarters?

CC: We love our new location and home! We fell in love with Holly's charm, history and small town America vibe. We live upstairs in our circa 1850s building and have our shop, offices and warehouse/workshop on the first floor. It is the perfect setup for us! We carry a variety of items . . . vintage, antiques, handmade goods and of course our RePurpose™ ReColor™ paint and stain line. We also offer workshops and plan to expand our shop into more of a general store theme. Folks visit Holly and our shop from all over Michigan and the US. It is a walkable town with great antique shops, boutiques and charming restaurants.

Follow Cari on her website and order her colorful, beautiful paint colors for all of your own RePurpose™ projects @ repurposeshop.com.



“Cari's new headquarters and home are like a think tanks of great ideas. She shares all her great finds and paint ideas and simply inspires you to make it all your own.”
— Matthew Mead



Paint palette

Paints used this issue:

1. Chroma•Color Cast Iron Kettle Black
2. Chroma•Color Cast Azurite Blue
3. Chroma•Color Cast Kelly Green
4. Chroma•Color Cast Perky Persimmon
5. Chroma•Color Cast Celadon
6. Chroma•Color Cast Mohair Blue
7. Chroma•Color Cast Flannel Gray
8. Benjamin Moore Blue 2066-10
9. Benjamin Moore Richmond Green 553
10. Benjamin Moore Candy Cane Red 2079-10
11. California Paints Use The Good China
12. California Paints Parrot Head
13. California Paints Sail to the Sea



Find these paints and much more online at Cari Cucksey's RePurpose Shop.

repurposeshop.com





YOU HOLD THE SPRAYER. THE BASE HOLDS THE TURBINE.

THE FLEXiO® 890 LIGHTWEIGHT, PORTABLE SPRAY SYSTEM

The FLEXiO® 890 is designed to take on longer projects with more user comfort, indoors and out. Its revolutionary iSpray® technology and powerful turbine combined with integrated storage and variable speed on the handle, make it an ideal tool to transform any surface. It's simply a smarter way to paint. Learn more at WagnerFlexio.com.



PAINT SMART.®

WAGNER®

A
monochromatic
palette
brings
texture
forward.

*Spray it
Forward*

Wagner Tool Used:
Home Décor Sprayer

Is your gallery wall an unorganized jumble of objects? Create unity and interest by using the **Wagner Home Décor Sprayer** and spraying all the items the same paint color as the wall. A single shade brings shape and texture to the forefront and turns a mix of flea market finds into one simple statement.

WAGNER

PAINT SMART.